

FocalPoint®

Graphic Workstations



Accelerating Emergency Response



by Honeywell

What Makes Us Different?

Gamewell-FCI's FocalPoint® Mobile was developed by first responders with first-hand knowledge of the challenges faced in emergency situations. This unique mobile unit presents vital facility information on a rugged, wireless military specification tablet PC. Not only valuable for fire scene management, facility managers will find FocalPoint® Mobile an essential tool for routine maintenance and support duties.



In an
emergency,
decisions need
to be made to
protect life
and property.

Where will you
find the
information to
base them on?

Whether you manage a multi-building college campus, a high-rise office tower, a 500-bed hospital, or a global chemical firm with plants and offices around the world, Gamewell-FCI's FocalPoint® Graphic Workstation offers real-time, accurate fire protection information about your facility – right at your fingertips.

FocalPoint simplifies and centralizes fire panel monitoring and control, providing quick, reliable intelligence for sound life safety decision-making. This means facility managers can react more rapidly to ensure that emergencies are quickly contained and damage minimized.

Using the Microsoft Windows® XP operating system, all the information needed to assess an emergency situation is presented in an easy to use, intuitive interface. The result? A superior decision-making tool that helps first responders formulate their plan of attack – and execute it successfully.

“view critical information wherever
you are, whenever you need it”

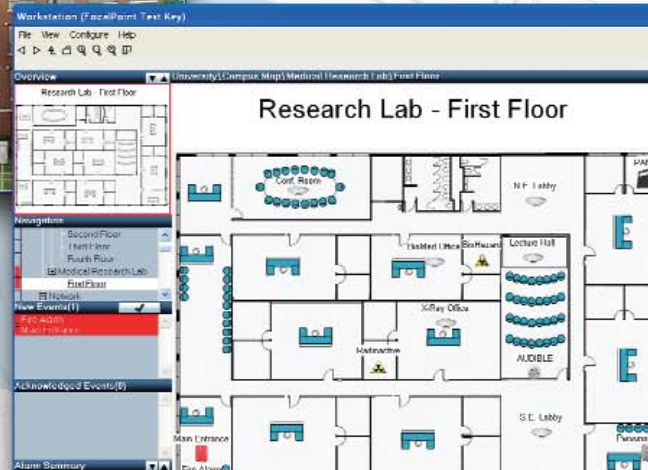
With Gamewell-FCI's breakthrough FocalPoint Mobile®, fire system monitoring can be moved from the control room to virtually any location offering flexibility and the best vantage point to manage the scene. Both the FocalPoint Graphic Workstation and the unrivalled FocalPoint Mobile give you confidence to assess complex emergency situations quickly, saving property and most importantly, saving lives.





A Clear View From the Top

- Information displayed on a fixed workstation or wireless ruggedized mobile tablet PC
- Cascading screens – provide full view and drill down display of event locations
- Automatic screen navigation – locates and zooms to the exact location of the event
- Prioritizes events – user automatically taken to the location of highest priority
- Information labels – identifies hazardous material locations, handicapped accessible areas, and more, using fully linked multimedia



RECEPTION/
ADMIN

FocalPoint® Monitors from Across the Street – or Around the Country

FocalPoint® shows how events progress and highlights locations of emergency equipment, hazardous materials, etc.

Using TCP/IP connectivity, FocalPoint® can link sites across the globe, supporting an unlimited number of users without distance limitations.

The ability to evaluate an alarm or trouble condition rapidly is paramount to maintaining steady operations. FocalPoint® helps even the smallest medical facility keep critical service uninterrupted.

The power of FocalPoint® comes from its ability to oversee multiple buildings spread out over miles of campus.

Remote Monitoring and Control You Can Depend On

- Remote site monitoring – link multimedia (text, audio, video, and graphic files) to any device
- Important fire alarm functions: Acknowledge, Reset, Silence, Enable/Disable*
- Takes the guesswork out of maintenance, personnel can take corrective action to minimize false alarms
- Security profiles allow you to control the level of access given to each system user
- Compatible with a variety of fire alarm control panels*

**contact factory for latest list*

With over 150 years experience in fire alarm technology, and our commitment to engineering the most technologically advanced fire safety systems available, decision makers worldwide select Gamewell-FCI products to safe guard their buildings, people and property.

The following is a partial list of companies that have chosen FocalPoint® to monitor, control and protect their most valuable assets. For further information please go to www.gamewell-fci.com.

American Chemical Society
Baptist Health Systems
ESPN Inc.
Job Corp. Little Rock AK
Louisiana Pacific Corp (LP)
Lumiere Place Casino
National Guard Camp Joe T. Robinson
Northrop Grumman Corporation
Texas Tech University
The Coco-Cola Company
Trump Towers

Technology and Tradition

Gamewell-FCI, a part of the Honeywell Life Safety Group, (NYSE - HON) combines a long tradition of excellence in protecting life and property with an innovative approach to technology and a proven record of outstanding customer service. With its resources, expertise and experience, Gamewell-FCI is dedicated to staying one step ahead of the ever-increasing challenges of fire and life safety.



by Honeywell

12 Clintonville Road Northford, CT 06472
Tel 203.484.7161 Fax 203.484.7118
www.gamewell-fci.com